

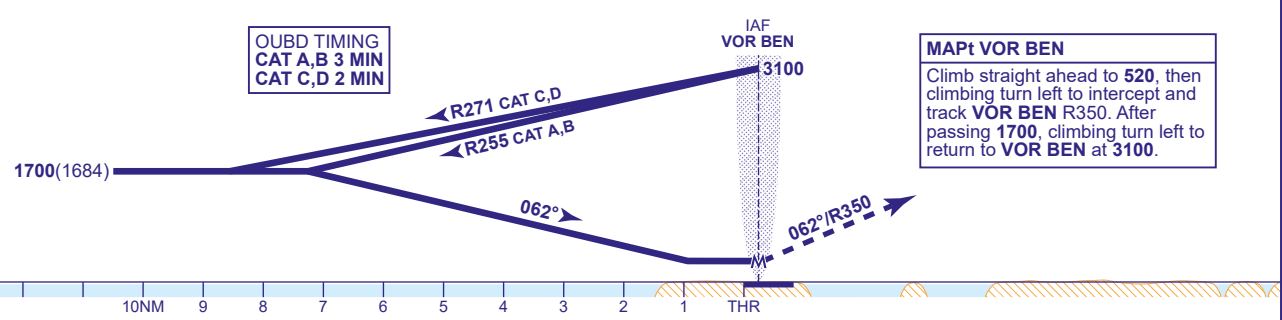
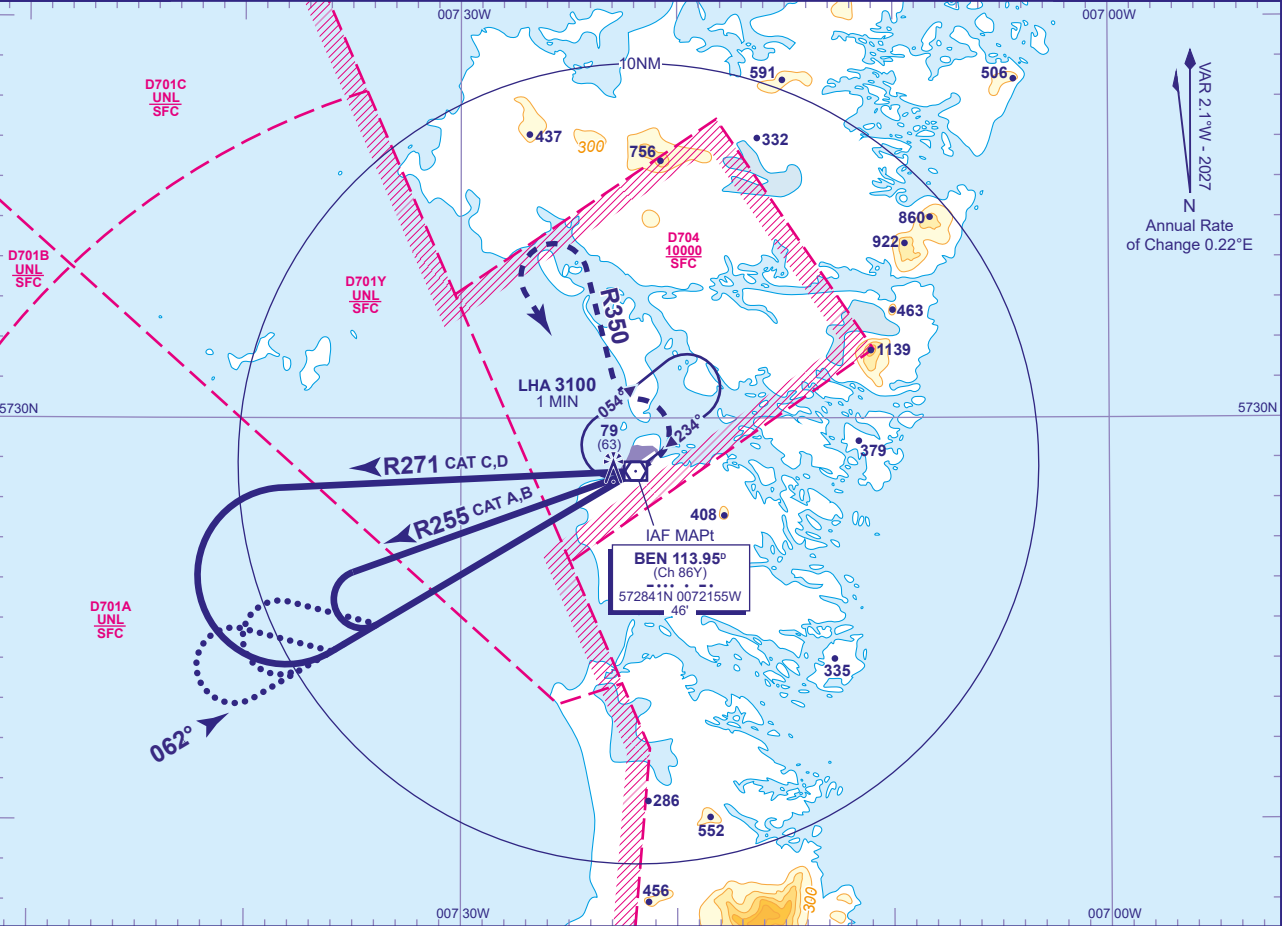
INSTRUMENT APPROACH CHART - ICAO

BENBECULA
VOR
RWY 06
(ACFT CAT A,B,C,D)



| | | | | |
|------|---------|-----------------------|-----------------------|----------------------------|
| APP | 119.205 | BENBECULA APPROACH | AD ELEVATION | 19 |
| TWR | 119.205 | BENBECULA TOWER | THR ELEVATION | 16 |
| AFIS | 119.205 | BENBECULA INFORMATION | OBSTACLE ELEVATION | 79 AMSL (63)(ABOVE THR) |
| ATIS | 129.885 | BENBECULA INFORMATION | BEARINGS ARE MAGNETIC | |

TRANSITION ALTITUDE
3000



| Aircraft Category | | A | B | C | D |
|--------------------|------------|----------|----------|----------|----------|
| OCA (OCH) | Procedure | 410(394) | 410(394) | 410(394) | 410(394) |
| VM(C)OCA (OCH AAL) | Total Area | 470(451) | 710(691) | 810(791) | 810(791) |

ALTERNATIVE PROCEDURE (PROCEDURE TURN REVERSAL)
Overhead VOR BEN (IAF) at 3100, fly outbound on R242 descending to 1700(1684). For CAT A,B 3MIN and CAT C,D 2MIN prior to procedure turn right, when established on FAT descend to MDH.

- NOTES**
- FAT is offset 4.3° from RWY 06 C/L.
 - Procedures interact with Danger Areas EGD701A, 701B, 701C, 701Y and EGD704. Procedure available subject to ATC permission.
 - Base Turn and Procedure Turn for CAT C and D aircraft are based on 250KIAS to accommodate military aircraft.